



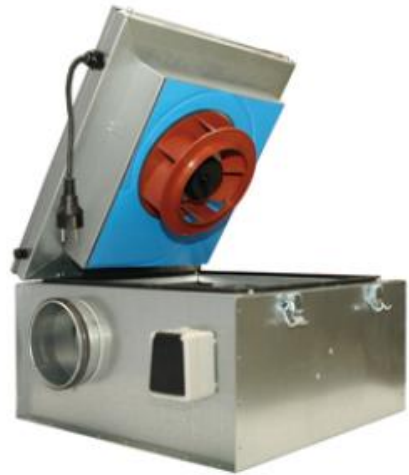
KVKE 125 EC MEV FAN

Item number 2570 [SAP APPENDIX Q Approved down to 0.25](#)

Description

- EC-motors, high level of efficiency
- 100% speed controllable
- Speed regulator included
- Low noise level
- Integrated motor protection

EC technology is intelligent technology; using integral electronic control which eliminates the slip losses in the motor & ensures that the motor always runs at optimal load and guarantees that the proportion of energy utilized effectively is many times higher and the energy usage considerably lower compared with AC motors.



EC fans are notable for their economical use of energy and excellent ease of control. They can be varied in speed to match the airflow demand, and operate at high efficiency levels. For the same air volume, they consume distinctly less energy than AC fan drives.

Another special feature of EC fans is their energy-saving potential not only at full load, but especially at part-load. When operating at part-load, the energy used is much lower than with an asynchronous motor of equivalent output.

Reduced energy usage guarantees a drop in operating costs.

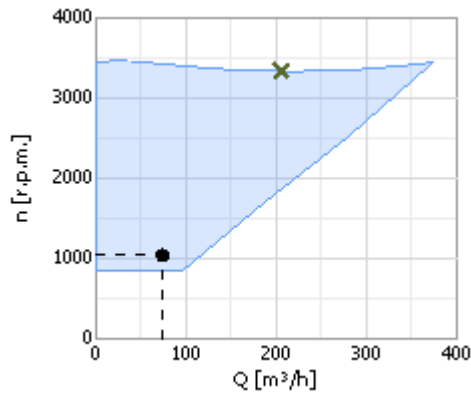
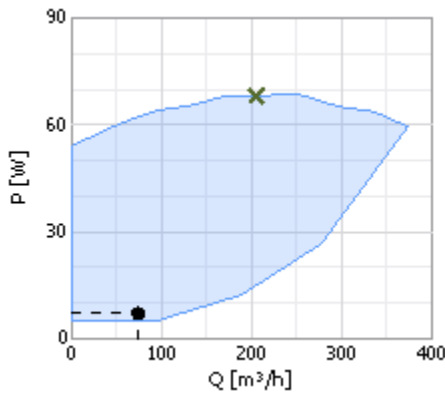
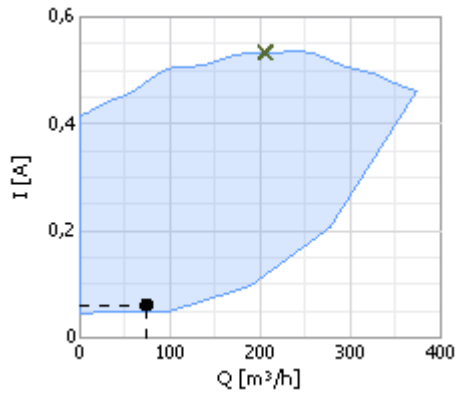
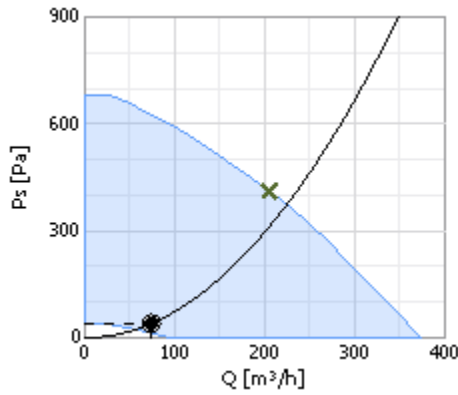
The KVKE EC models have a single inlet centrifugal fan with backward-curved blades and a maintenance-free external rotor motor (EC). These fans develop relatively high static pressure and have a very high efficiency. The fans are delivered with a pre-wired potentiometer (0-10V) that allows you to easily find the desired working point.

The KVKE motor and impeller are mounted on the access cover for ease of maintenance. The service cover can be easily removed by withdrawing the hinge pin. To protect the motor from overheating, the fans have integral thermal contacts with automatic reset. The fans can be installed in any position and are easy to connect to spiral ducts using FK mounting clamps. The KVKE models are manufactured from galvanised sheet steel and are thermally and acoustically insulated with a 50 mm layer of rockwool with a surface liner which prevents the migration of fibres into the airstream.

Technical parameters

Parameter	Value	Unit
Voltage	230	V
Frequency	50/60	Hz
Phase	1	~
Power	68,7	W
Current	0,536	A
Max.airflow	374	m ³ /h
R.p.m.	3 339	r.p.m.
Sound pressure level at 3 m	41,1	dB(A)
Weight	13,2	Kg
Insulation class, motor	B	
Enclosure class, motor	44	IP
Max. temperature of transported air	60	°C
Max. temperature of transported air when speed-controlled	60	°C

Diagrams

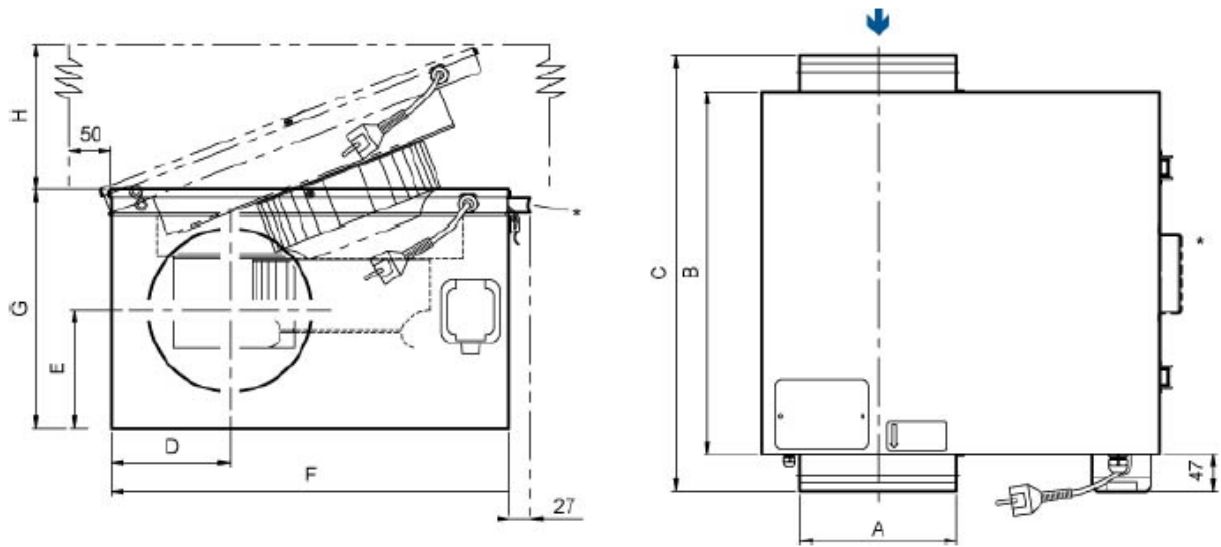


User selected data

○ Selected Point		● Working point								
Q[m³/h]	Ps [Pa]	Q[m³/h]	Ps [Pa]	P [W]	N [r.p.m.]	I [A]	U [V]	SFP [kW/m³/s]	E [%]	
73,7	40,3	73,7	40,3	7,09	1040	0,0617	2,65	0,346	10,8	

	Mid frequency band								
	63	125	250	500	1k	2k	4k	8k	Tot
Inlet Lw dB(A)	41	35	27	23	19	16	17	20	42
Outlet Lw dB(A)	49	41	40	44	43	42	39	31	52
Surrounding Lw dB(A)	12	16	12	15	14	14	15	17	24

Dimensions

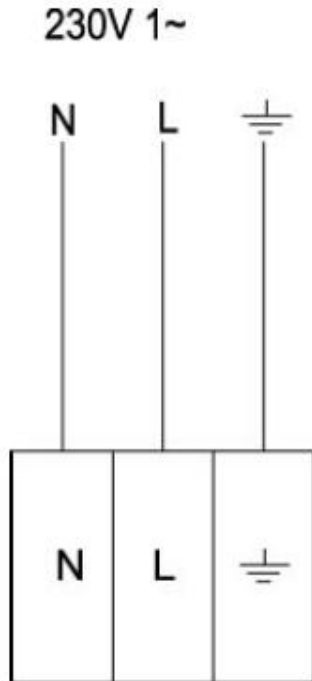


	A	B	C	D	E	F	G	H
KVKE 125 EC	125	433	479	125	128,5	442	246	470
KVKE 160 EC	160	482	528	145,5	132,5	505	266	530
KVKE 200 EC	200	482	534	150,5	149	505	303	530
KVKE 250 EC	250	578	700	176	174	596	359	620
KVKE 315 EC	315	680	802	208,5	207,5	705,5	430	730

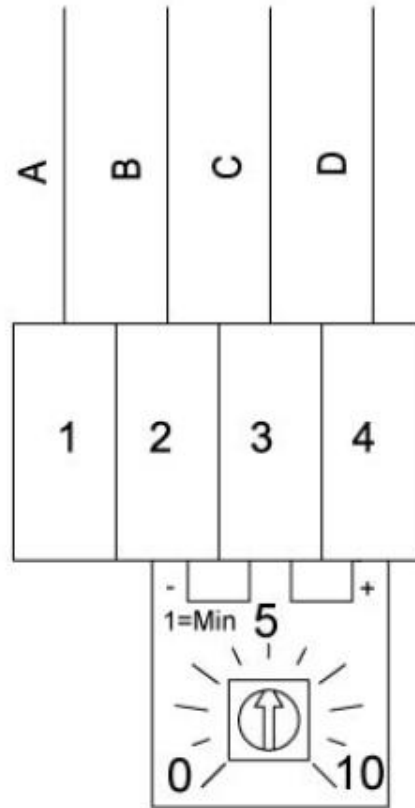
* Handle 315M/L

Wiring

Wiring power cable



Internal potentiometer, default



A White
 B Blue
 C Yellow
 D Red

Accessories

Electric accessories

DMD-C Pressure controller
 MTP 10, 10K, Speed control
 MTV-1/010 Controller 0..10V

Accessories

CB 125-0,6 230V/1 Duct heater
 CB 125-1,2 230V/1 Duct heater
 CB 125-1,8 230V/1 Duct heater
 CBM 125-1,2 230V/1 Duct heater
 CWK 125-3-2,5 Duct cooler, circ
 FFR 125 Filter cassette
 FGR 125 Filter cassette G3
 FK 125 Fast clamp
 IGC 125 Intake grid
 IGK 125 Wall Grid

LDC 125-600 Silencer
 LDC 125-900 Silencer
 RSK 125 Back draft damper
 SG 125 Protection guard
 VBC 125-2 Water heating battery
 VBF 125 Water heating battery
 VK 12 Louvre shutter
 VKK 125 Back draft damper



Specification text

The KVKE EC models have a single inlet centrifugal fan with backward-curved blades and a maintenance-free external rotor motor (EC). These fans develop relatively high static pressure and have a very high efficiency. The fans are delivered with a pre-wired potentiometer (0-10V) that allows you to easily find the desired working point. The potentiometer is set between 6-10V from factory. This can easily be changed if the installation requires more performance.

The KVKE motor and impeller are mounted on the access cover for ease of maintenance. The service cover can be easily removed by withdrawing the hinge pin. To protect the motor from overheating, the fans have integral thermal contacts with automatic reset. The fans can be installed in any position and are easy to connect to spiral ducts using FK mounting clamps. The KVKE models are manufactured from galvanised sheet steel and are thermally and acoustically insulated with a 50 mm layer of rockwool with a surface liner which prevents the migration of fibres into the airstream.