

- High efficiency rotating heat exchanger without need for defrosting will give the highest average efficiency over the year
- Prepared for connection to cookerhood - duct connection from top and bottom or direct connection to cookerhood
- Handed – simple and flexible duct connection
- Designed for integration in kitchen design by mounting standard kitchen cupboard door
- Automatic change to summer operation without heat recovery
- Operation from cookerhood or separate control panel with transformer

The VR-300 TK/B is a compact unit for ventilation of dwellings and is primarily developed for wall mounted installation, but can be horizontal. The unit is double skinned, fully insulated, equipped with centrifugal fans on inlet/extract, high efficiency rotating exchanger block, thermostat operated re-heater battery and filters.

The unit is equipped with large inspection hatches on both sides and is handed for flexible and simple connection to duct system.

Duct from cookerhood can be connected to integrated bypass from top or bottom of the unit, so that extract from the kitchen is led directly to the extract fan, bypassing the exchanger block. Thermostat operated re-heater battery will maintain set supply air temperature when the extract air is made in bypass. As an alternative, a cookerhood can be installed directly under the unit. If the unit is installed over the cooker, a standard kitchen cupboard door can be mounted to cover the unit front. Alternatively white painted front and side covers are available.

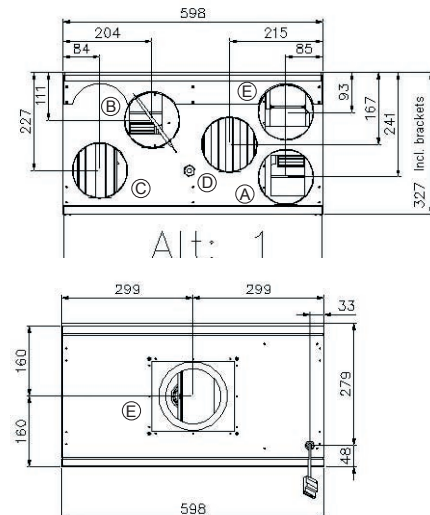
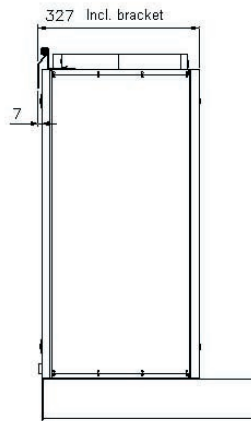
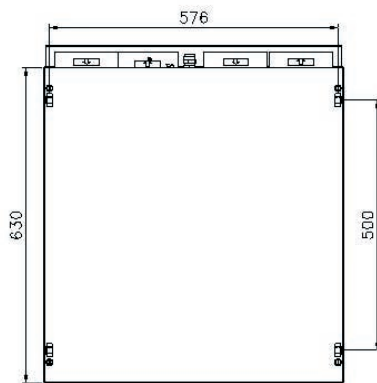
The unit will automatically alternate between winter operation with heat recovery and summer operation without heat recovery. Airflow is controlled from cookerhood or separate control switch with transformer (CTK/B or CTK/B-S). Required supply air temperature is set from switch inside the unit.

Electrical connection

- Connection to power supply via apx. 1 m cable and earthed plug
- Special plug for connection of control panel or cookerhood

VR-300 TK/B

Voltage/Frequency	V/Hz	230-240 / 50
Phases	~	1
Motors	W	2 x 138
Re-heater	W	1000
Fuse	A	10
Net weight / incl. packing	kg	35/45
Filter, inlet	bag	EU7
Filter, extract	bag	EU3

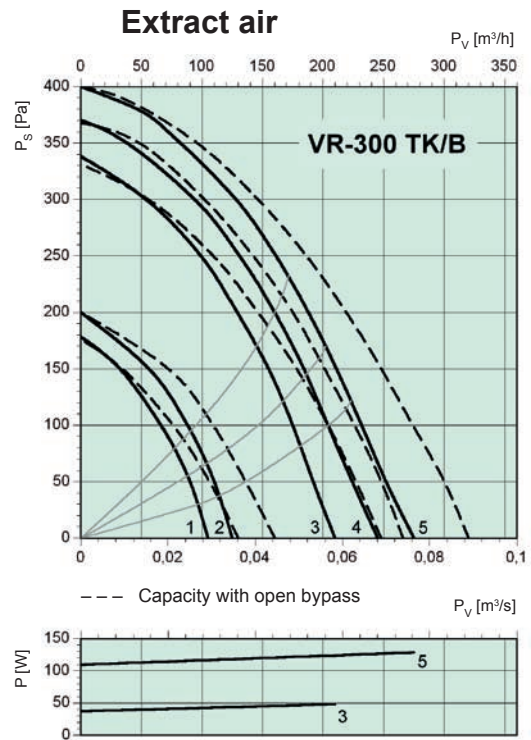
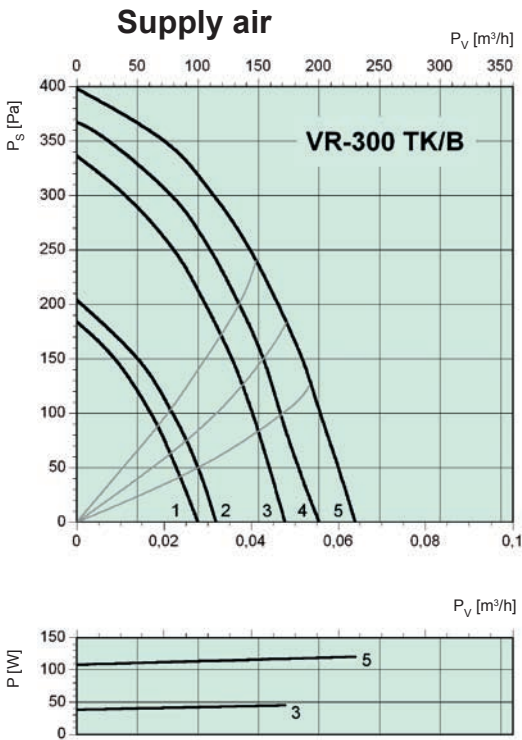


Duct connections (all Ø125 mm female)

- | | |
|---------------------|---|
| A Discharge air | D Extract air from wet rooms/kitchen |
| B Supply air | E Extract air from cookerhood, if installed |
| C Fresh outdoor air | |

Capacity diagram

The diagram shows available pressure to duct



VR-300 TK/B

Supply

L_{WA} outlet, dB(A)	Octave band, Hz								
	Tot	63	125	250	500	1k	2k	4k	8k
5 max, 230 V	70	56	56	63	64	63	63	54	48
4 normal high, 160 V	68	55	54	62	62	62	59	51	46
3 normal lav, 130 V	66	54	52	60	60	59	55	48	41

Extract

L_{WA} outlet, dB(A)	Octave band, Hz								
	Tot	63	125	250	500	1k	2k	4k	8k
5 max, 230 V	62	48	49	56	60	48	43	35	29
4 normal high, 160 V	60	46	46	54	58	47	41	32	25
3 normal low, 130 V	58	45	44	51	56	44	38	29	28

Sound level exhaust ~ Supply, outlet

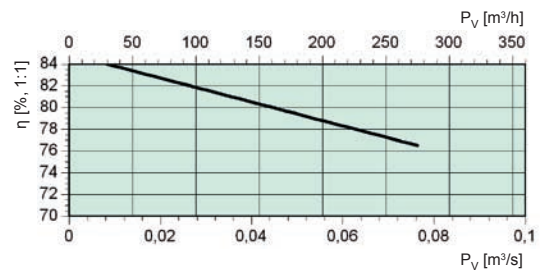
Sound level fresh air ~ Extract, inlet

Surroundings

L_{WA} outlet, dB(A)	Octave band, Hz								
	Tot	63	125	250	500	1k	2k	4k	8k
5 max, 230 V	48	16	21	34	41	44	44	33	29
4 normal high, 160 V	46	11	18	32	40	42	40	29	24
3 normal low, 130 V	42	13	15	28	35	39	34	25	25

Temperature efficiency

At air ratio 1:1 and air humidity 50%



NOTE!

The tables show sound power level L_{WA} , not to be confused with sound pressure level L_{pA}

Accessories

* Combi grill should not be installed in apartments blocks if kitchen extract is connected

Specifications may be changed without notice

